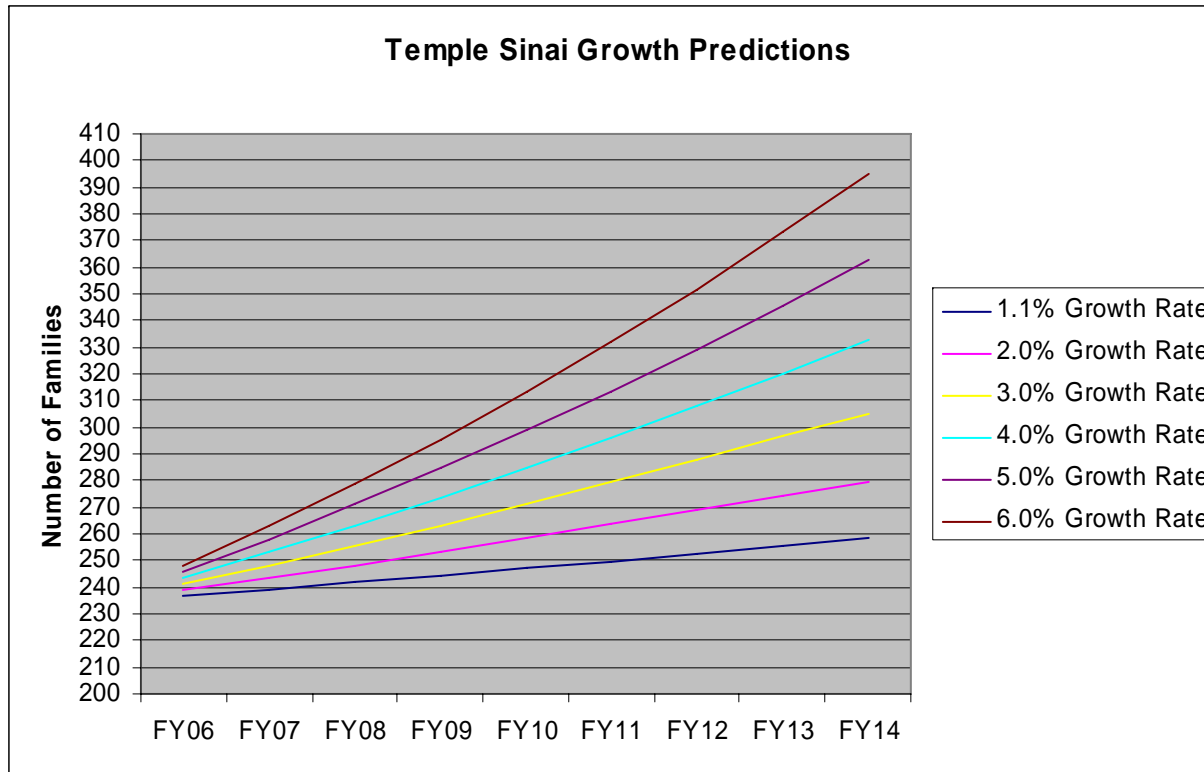


Temple Sinai Membership Growth Predictions

- Minimum Expected Growth Rate= 1.1% (Saratoga County growth from March '06 Census estimate for '04 and '06)
- Growth Rate – Average of '00 to '05= 5.4% (from Temple records)
- Growth Rate – Average of '00 to '06= 5.7% ('06 estimated from roster of individuals)
- Growth Rate – Average of '95 to '00= 5.2% ('95 from member recollection, '96 to '99 data missing)

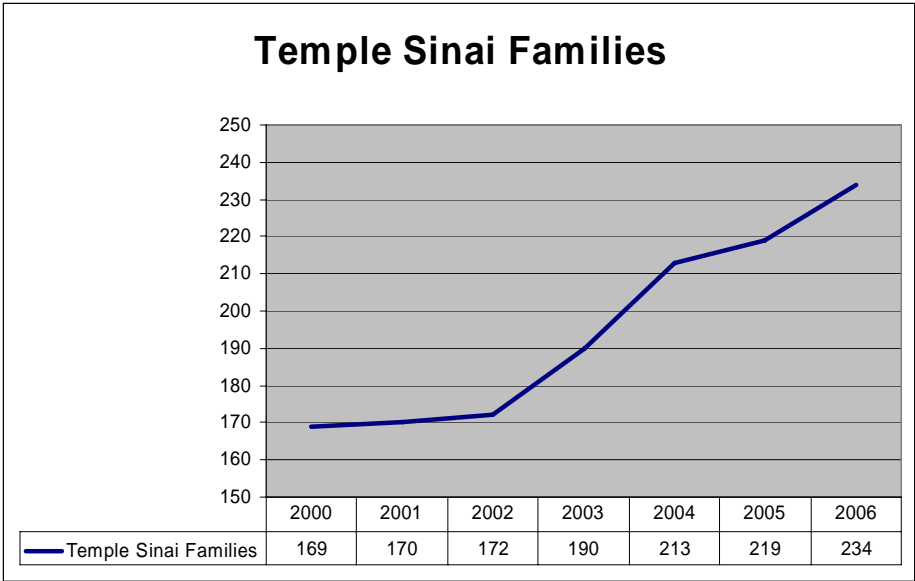


Note- Future growth rate may not reflect past growth rates, which have been influenced by the effectiveness of recent membership drives, influx of people into area after 9/11, etc. Future growth rates may be higher or lower because of growth in local industries, senior housing under construction, condos under construction, economic situations, etc.

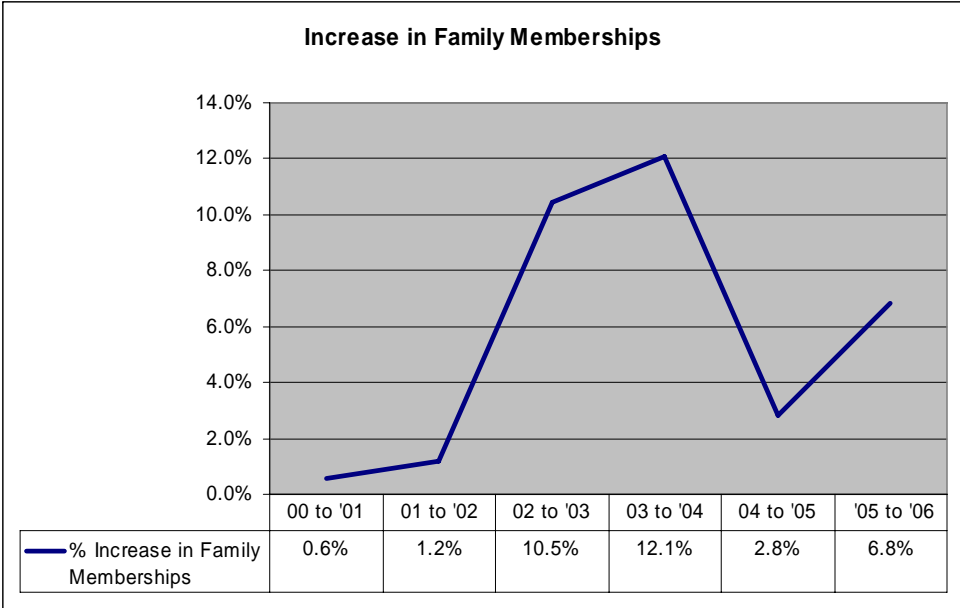
Temple Sinai Membership Growth Predictions (cont.)

- Factors which could influence future growth-
 - A significant increase (>25%) in membership would be expected if either of the Saratoga County congregations were disbanded
 - Probability – low?
 - A decrease in membership would be expected if Rabbi Linda and Rabbi Jonathan left
 - Probability – low?
 - An increase in growth rate may occur as a result of ongoing and planned housing/business projects-
 - Malta business park
 - Senior housing in Milton and Saratoga
 - Conversion of Skidmore 'pink' dorms to condos, etc.

Notes-



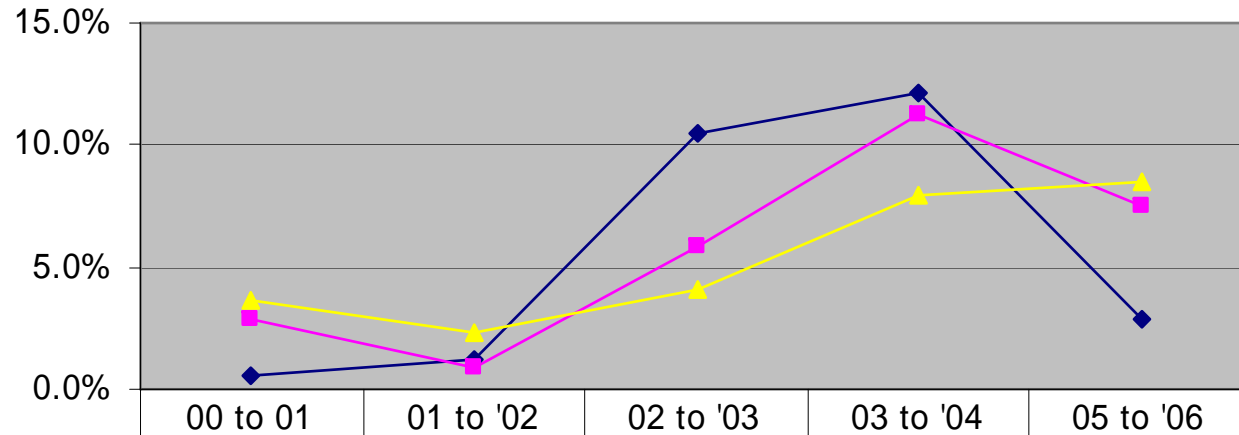
- **2000 to 2005 numbers** – Obtained from Temple records at end of each year
- **2006 number** – High estimate based on roster of individuals obtained from Temple database; may not include resignations.
- **5.7%** = Average yearly growth from 2000 to 2006
- **5.4%** = Average yearly growth from 2000 to 2005
- **5.2%** = Average yearly growth from 1995 to 2000 (134 families estimated to be members in 1995)



Alternate Means to Evaluate Data via Moving Averages

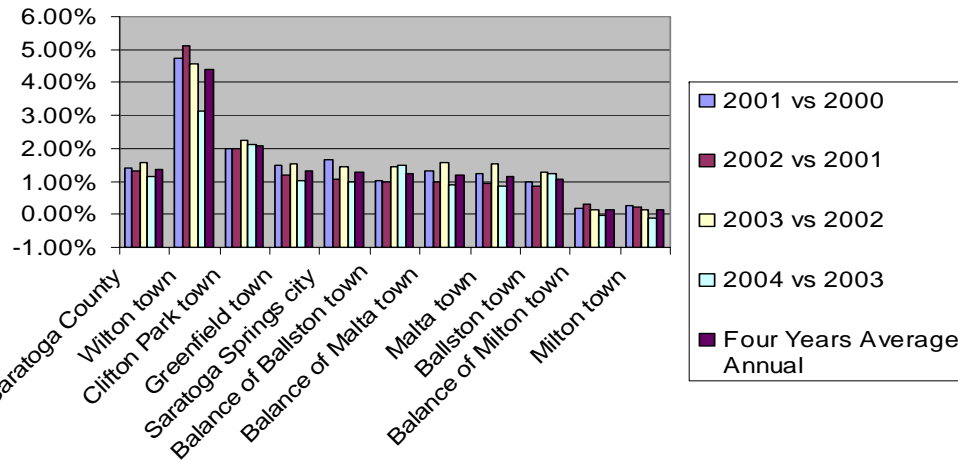
Temple Sinai Growth Rates via Moving Averages

(2 point average - average of prior and reported year; 3 point average - average of two prior years and reported year; '99 to '00 growth rate = 5.2% assuming linear growth between '95 and '00)



◆ Growth Rate	0.6%	1.2%	10.5%	12.1%	2.8%
■ Moving Average Growth Rate (2 points)	2.9%	0.9%	5.8%	11.3%	7.5%
▲ Moving average Growth Rate w/3 points	3.7%	2.3%	4.1%	7.9%	8.5%

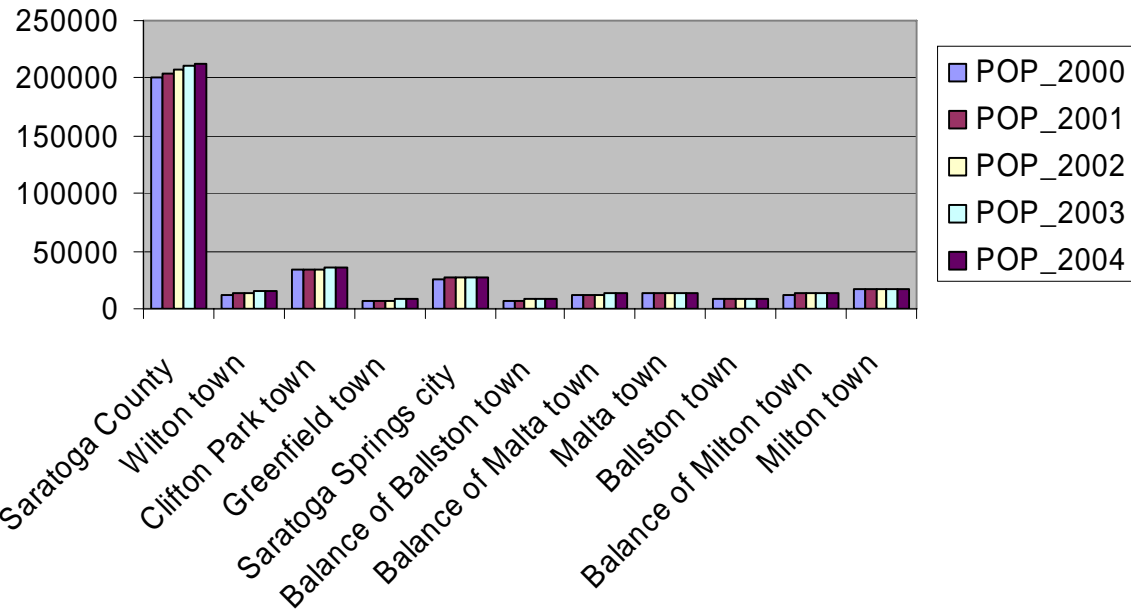
'00 to '04 Saratoga County Population Growth Rate



Data Source –US Dept. of Commerce, Bureau of the Census Population Estimates, and NYS Dept. of Health Vital Statistics

NAME	<u>2001 vs 2000</u>	<u>2002 vs 2001</u>	<u>2003 vs 2002</u>	<u>2004 vs 2003</u>	<u>Four Years Average Annual</u>
Saratoga County	1.41%	1.33%	1.56%	1.14%	1.36%
Wilton town	4.75%	5.12%	4.58%	3.15%	4.40%
Clifton Park town	1.99%	1.97%	2.26%	2.10%	2.08%
Greenfield town	1.47%	1.17%	1.54%	1.04%	1.31%
Saratoga Springs city	1.64%	1.05%	1.44%	1.00%	1.28%
Balance of Ballston town	1.04%	0.99%	1.44%	1.47%	1.23%
Balance of Malta town	1.31%	1.00%	1.58%	0.90%	1.20%
Malta town	1.25%	0.95%	1.54%	0.87%	1.15%
Ballston town	0.97%	0.86%	1.27%	1.24%	1.08%
Balance of Milton town	0.16%	0.31%	0.15%	-0.04%	0.14%
Milton town	0.26%	0.22%	0.15%	-0.12%	0.13%

'00 to '04 Saratoga County Population

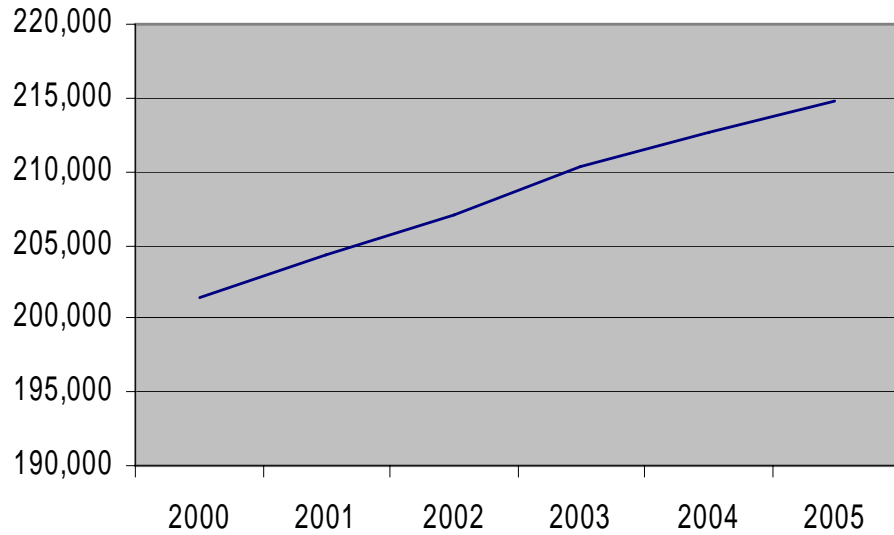


Data Source –

- Capital District Estimated Populations and Component of Change:2000-2002, US Dept. of Commerce, Bureau of the Census Population Estimates, and NYS Dept. of Health Vital Statistics (used for POP 2000)
- POP 2001 to 2004 based on POP 2000 and % estimated change from prior slide)

<u>NAME</u>	<u>POP 2000</u>	<u>POP 2001</u>	<u>POP 2002</u>	<u>POP 2003</u>	<u>POP 2004</u>
Saratoga County	201492	204340	207065	210302	212706
Wilton town	12701	13304	13985	14625	15085
Clifton Park town	33296	33958	34628	35411	36156
Greenfield town	7395	7504	7592	7709	7789
Saratoga Springs city	26310	26742	27022	27412	27686
Balance of Ballston town	7573	7652	7728	7839	7954
Balance of Malta town	12450	12613	12739	12940	13056
Malta town	13054	13217	13342	13547	13665
Ballston town					
Balance of Milton town					
Milton town					

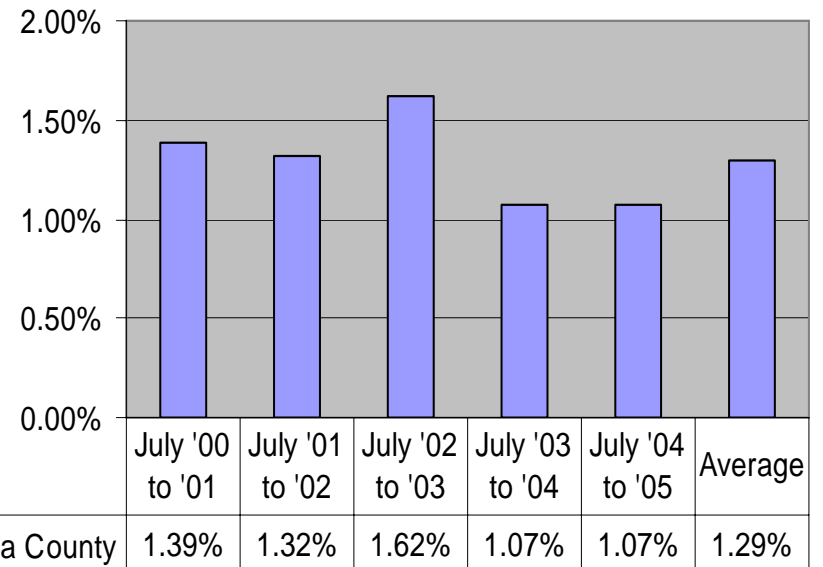
Saratoga County Population Growth



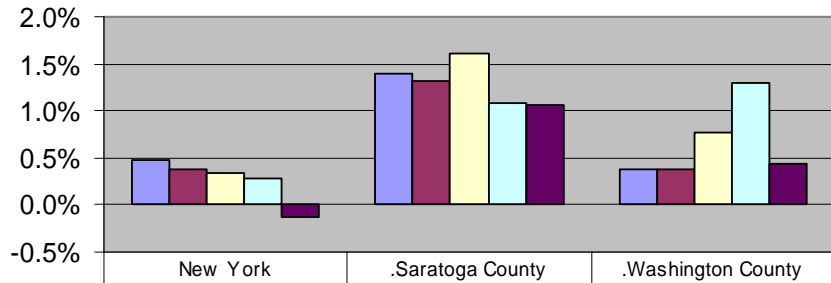
Data Source – Census Bureau report dated March 2006

1.1% growth of Saratoga County population used for Temple Sinai minimum growth predictions of outyear membership.

Saratoga County Population Growth Rate



Population Growth by Area



	New York	.Saratoga County	.Washington County
July '00 to '01	0.5%	1.4%	0.4%
July '01 to '02	0.4%	1.3%	0.4%
July '02 to '03	0.3%	1.6%	0.8%
July '03 to '04	0.3%	1.1%	1.3%
July '04 to '05	-0.1%	1.1%	0.4%

Data Source – Census Bureau report dated March 2006

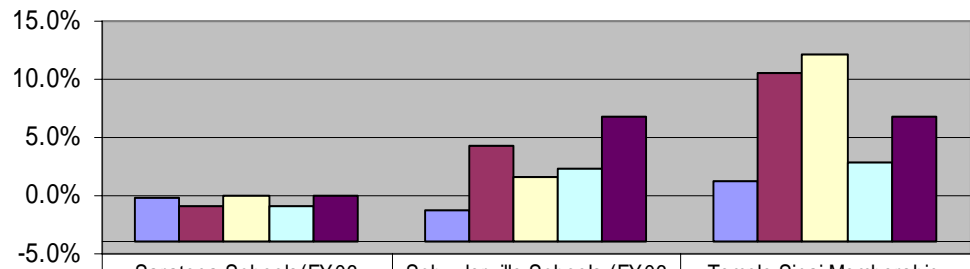
1.1% growth of Saratoga County population used as justification for minimum projected Temple Sinai membership in the outyears.

Data Source –

- Saratoga Springs City School District letter to Temple Sinai, dated 2/10/2006
- Bothwell Consulting Associates' letter to Schuylerville Central Schools, dated 2/7/2006

Analysis used to conclude that Temple Sinai student population needs to be evaluated independently of the number of Temple Sinai members.

Temple Sinai vs. School Growth Rate



	Saratoga Schools (FY06 Actual=6,843)	Schuylerville Schools (FY06 Actual=1,848)	Temple Sinai Membership (FY06 Actual ~234)
July '00 to '01	-0.1%	-1.3%	1.2%
July '01 to '02	-0.9%	4.3%	10.5%
July '02 to '03	0.1%	1.6%	12.1%
July '03 to '04	-0.9%	2.3%	2.8%
July '04 to '05	0.0%	6.7%	6.8%

Limitations of Analysis

- Membership numbers from a consistent source exist for '00 to '05 only.
- Measurement errors exist because of the difficulty to identify non-paying, non-active members who no longer consider themselves members of the Congregation. These errors may be in the order of 3 to 4%.
- '02 to '03 and '03 to '04 high growth rates may be an anomaly due to relocation of families from NYC area after 9/11 and/or a strong membership drive
- The potential source of new members from unaffiliated families, leaning toward Reform Judaism, is not known.
- Comparison data with other geographical areas and congregations (e.g., the correlation of community growth with congregation growth, the tipping point when a Jewish community reaches a critical mass and splinter groups and ultimately multiple congregations emerge, the percent of members that identify themselves as being Reform) is lacking.
- The above limitations are applicable to predictions of Temple Sinai religious school growth. School growth predictions are further limited by missing data for FY00, FY01 and FY03.
- Impact of Limitations
 - Although numerous, the limitations do not alter a best estimate conclusion that Temple Sinai membership continues to grow, although the range of predicted growth rates (1% to 6%) is high.
 - The limitations also do not alter the best estimate prediction that the number of Temple Sinai students is not expected to grow.

Predicted Number of Temple Sinai 3 to 16 Year Old Members

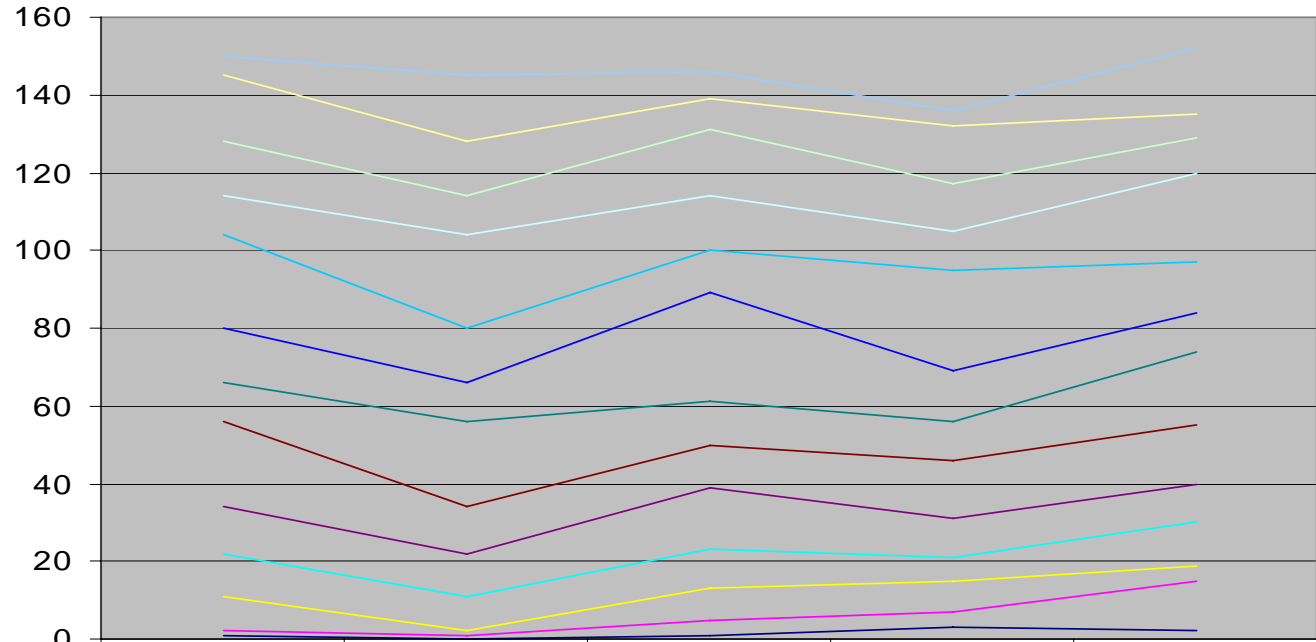
- Based on available information,
 - The number of Temple Sinai students is not predicted to have a positive growth trend in the out years
 - The number of students of any particular age is also not predicted to have a positive growth trend
 - Year to year enrollment is expected to vary around a mean value
 - FY06 enrollment appears to be a maximum number of students expected for out year enrollment
- Above predictions supported by Saratoga School System enrollments
 - High growth rate of Wilton included in Saratoga School predictions
- An increase in students would occur if either of the Saratoga County congregations were disbanded

Data Source – Temple Sinai Religious School records

Statistical Analysis – NUREG Computer Code

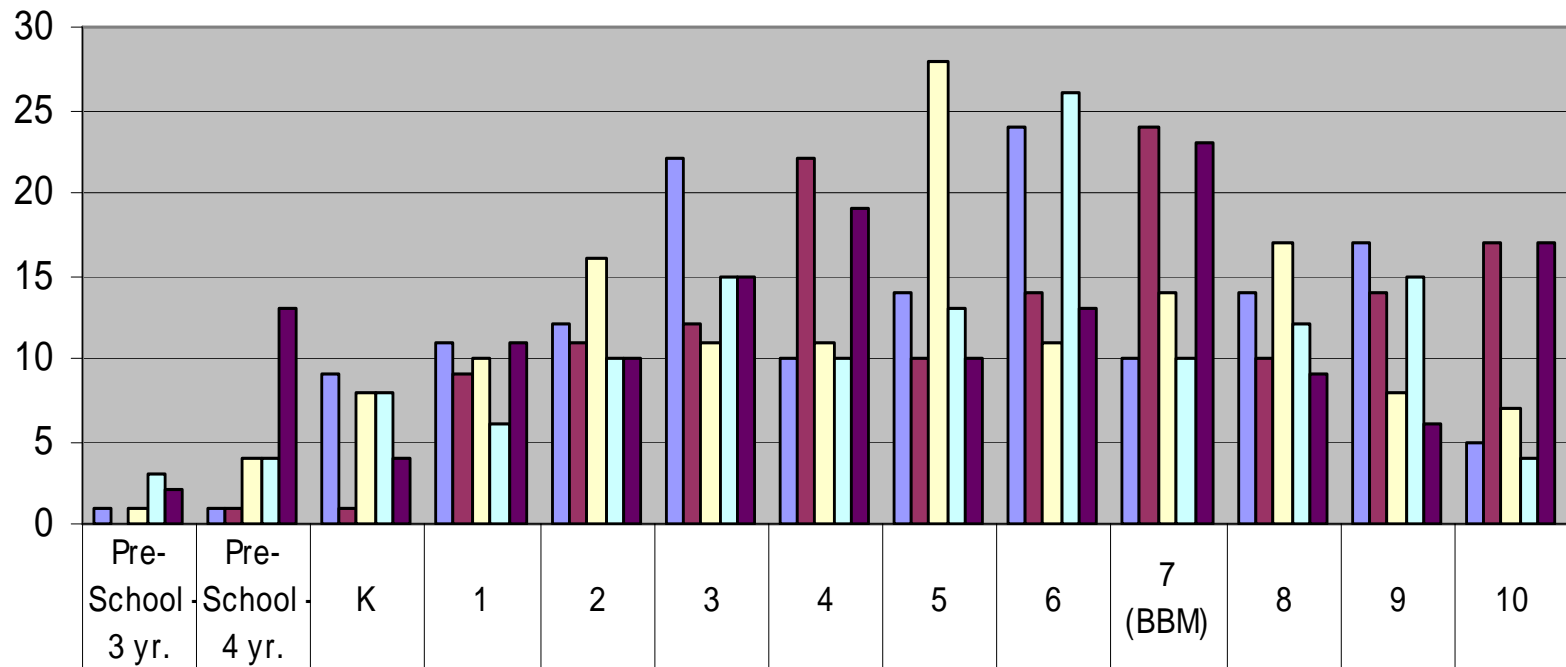
Note- Future growth rate may not reflect past growth rates, which have been influenced by the effectiveness of recent membership drives, influx of people into area after 9/11, etc. Future growth rates may be higher or lower because of growth in local industries, senior housing under construction, condos under construction, economic situations, % of new members with children, etc.

Number of Temple Sinai Students



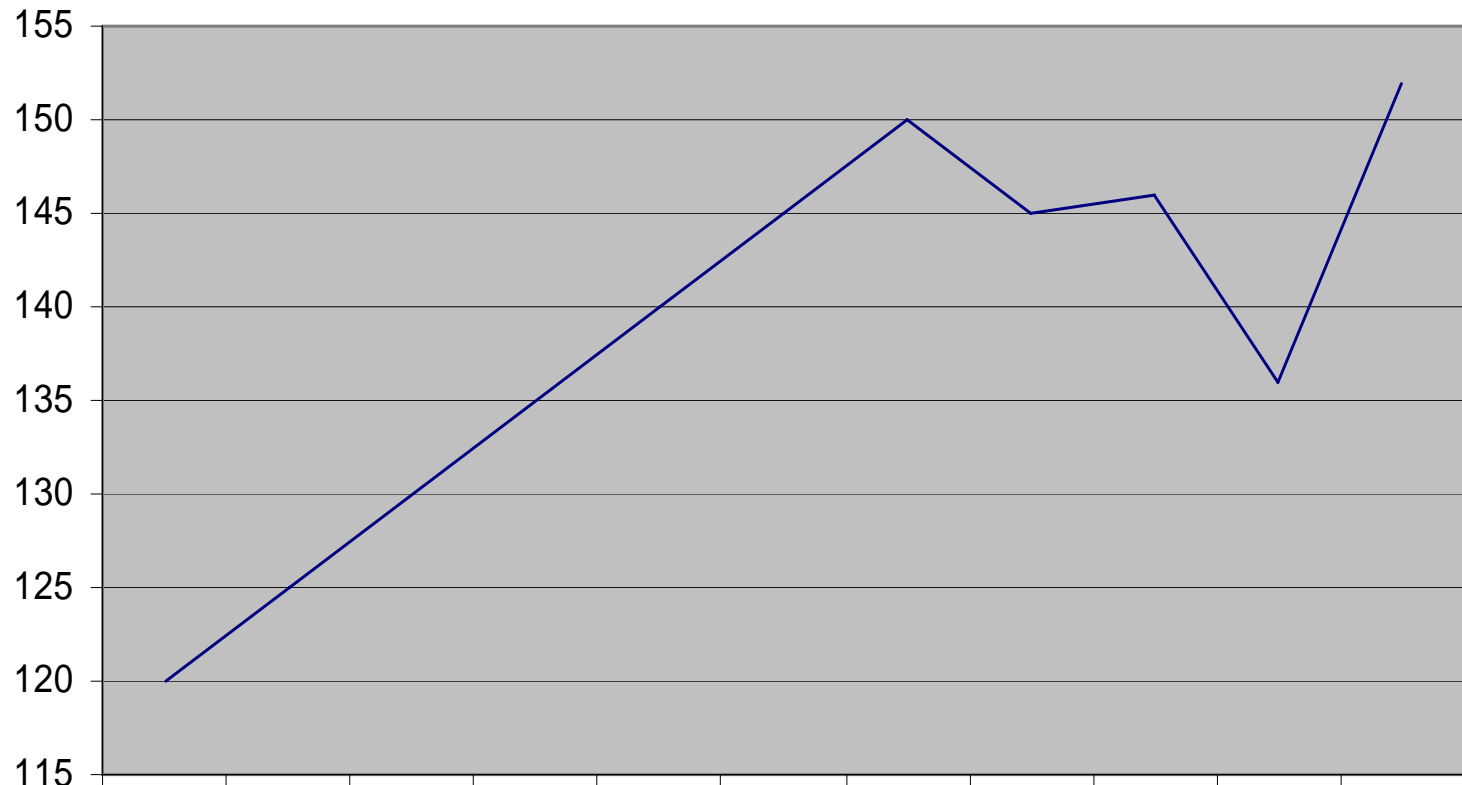
	FY02	FY03 Est.	FY04	FY05	FY06
10	5	17	7	4	17
9	17	14	8	15	6
8	14	10	17	12	9
7 (BBM)	10	24	14	10	23
6	24	14	11	26	13
5	14	10	28	13	10
4	10	22	11	10	19
3	22	12	11	15	15
2	12	11	16	10	10
1	11	9	10	6	11
K	9	1	8	8	4
Pre-School - 4 yr. old	1	1	4	4	13
Pre-School - 3 yr. old	1	0	1	3	2

Number of Temple Sinai Students



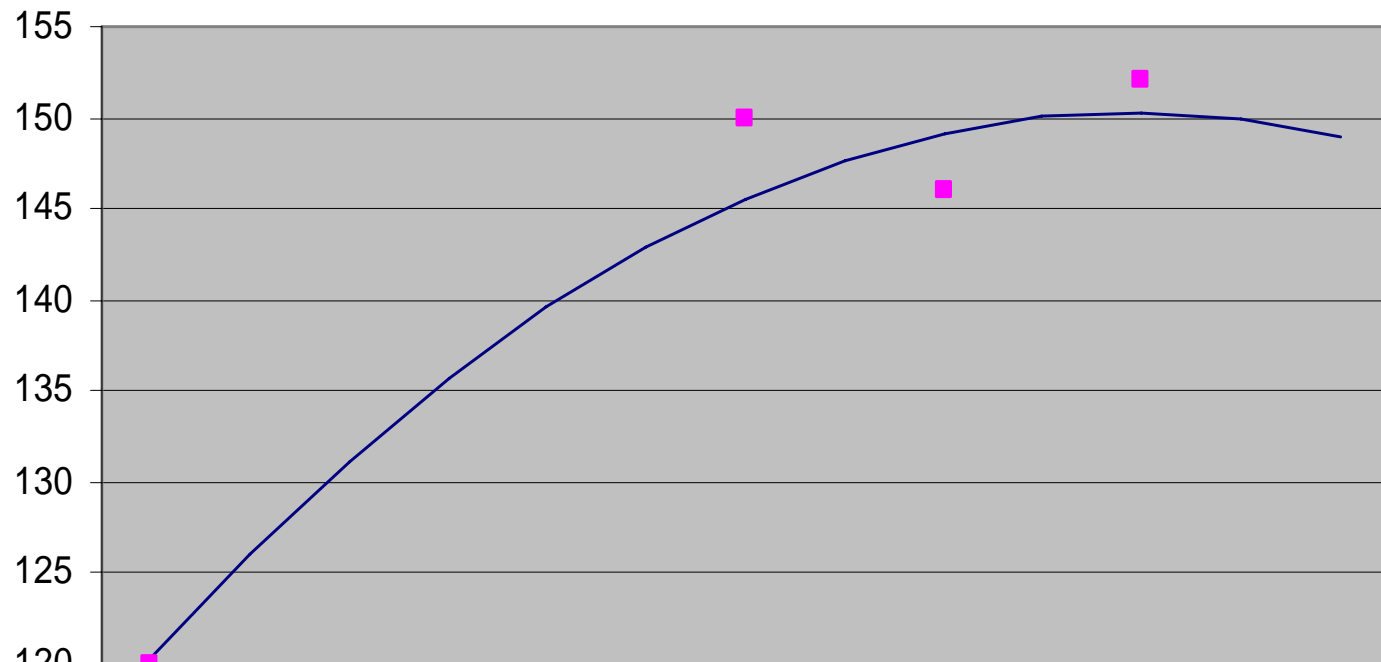
FY02	1	1	9	11	12	22	10	14	24	10	14	17	5
FY03 Est.	0	1	1	9	11	12	22	10	14	24	10	14	17
FY04	1	4	8	10	16	11	11	28	11	14	17	8	7
FY05	3	4	8	6	10	15	10	13	26	10	12	15	4
FY06	2	13	4	11	10	15	19	10	13	23	9	6	17

Total Number of Students



	FY96	FY97 (est)	FY98 (est)	FY99 (est)	FY00 (est)	FY01 (est)	FY02	FY03 Est.	FY04	FY05	FY06
— # of Students	120	125	130	135	140	145	150	145	146	136	152

Number of Temple Sinai Students - Polynomial Regression Analysis (w/ deletion of FY05 actual data)



	FY96	FY97 (est)	FY98 (est)	FY99 (est)	FY00 (est)	FY01 (est)	FY02	FY03 Est.	FY04	FY05 (est)	FY06	FY07	FY08
— Regression Analysis	120.3	126.1	131.2	135.7	139.6	142.9	145.6	147.7	149.1	150	150.3	149.9	149
■ Actual Data	120	0	0	0	0	0	150	0	146	0	152		